



Inside the L.C. Bates Museum

Summer Camps Excite Young Naturalists

In Balance / Imbalance Exhibit Features Maine Artists

May 2023

Saturday, May 6th, 4 PM
In Balance / Imbalance
Opening Reception

Saturday, May 6th, 4 PM
In Balance / Imbalance
Opening Reception for the museum's
summer art exhibition—Come see the
wonderful exhibit.

Life is about balance. Far from being
static, balance in nature is achieved
through dynamic processes. Balance
involves circulation, exchange, regulation,
and negotiation, it also involves diversity
and creativity.

In Balance/ Imbalance is the result of a
collaborative effort between the L.C. Bates
Museum staff and two Colby College
students, Zehra Gundogdu and Anna
Jaubert, under the supervision
of Professor Véronique Plesch.



Ellen Roberts, *Butterfly Sail*, stitched monotype,
17.25 x 17.25 in., 2022.

Newsletter Nature Fact



John Meader delivered his work,
Weeping Ice, a Warm Winter Day,
monotype on paper, 37 x 30 in, 2022, for
inclusion in the summer exhibit.



Albino Porcupine

According to the Maine Department of
Inland Fisheries and Wildlife, there's about
a 1 and 10,000 chance of a porcupine
being born albino. Seeing one out in
nature is not likely. But when you visit the

Museum News

The museum will host a free Object Care and Storage workshop on Wednesday, June 7 with conservator Ron Harvey. It will start at 9:30 and run until 3 PM. Please call the museum to register for the event.

The museum is pleased to have received donated support to continue to address the masonry needs of the historic 120 year old Romanesque Revival building.



Spring Wildflowers are in Bloom

Walk the Good Will Hinckley Trails to see trillium and other native plants in flower.

Museum Volunteers

Come join the museum team and help provide educational activities and events for visitors from our community.



Museum Summer Camps are Back

Come Explore Our Natural World With Nets in Hand

Nature Camp

nature is not likely. But when you visit the museum you can view a taxidermy mount and learn about albino porcupines.

GWH History



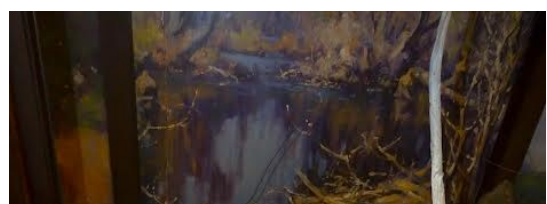
Fun games were played by the children at Good Will. Does anyone know what game the boys are playing? Photo from the Good Will Hinckley Archives.



All are invited to visit the Bird Gallery to draw or paint the many amazing specimens of birds. You can select a bird you like to paint that might have a unique bill, striking colors or sharp talons.

Recently Donated Bobcat Mount

A wonderful bobcat mount was recently donated to the museum's natural history collection. This specimen from the area will support learning about regional mammals and different taxidermy presentations.



June 26-30th

Dig Into the Past -History Camp

July 5-7th

Eco Exploration!

July 10-14

EARTH And Space NASA Camp

July 17-21st

Please call or email the museum for more information about camps or to register your child for a memorable museum experience.



Join the fun! Become an L.C. Bates Museum member!

Member Benefits

- Announcements and invitations to events and exhibit openings
- Museum Newsletter
- Free admission to the museum
- 10% discount at the museum gift shop!

Call or Email the museum for information for Membership Information

Interested in making a contribution to the museum? Contact us at lcbates@gwh.org or 207-238-4250 if you would like to information about making a donation. Your donations help make the museum possible!

May Museum Activities For Families and Children

Saturday, May 6, 9:30 AM

Jane's Walk ME– Explore History on the GWH Campus

As part of Jane's Walk take a walking tour of the museum's architecture and the GWH campus near the museum including buildings, the road and pond behind the museum. We will talk about the Maine architect William Miller of Lewiston, who designed the museum and 4 other buildings on campus and Parker of Olmsted Firm's design of the road and pond. Jane's Walk is a global festival of free, walking conversations inspired by community activist Jane Jacobs. Jane's Walks combine the simple act of exploring a place with personal observations, local history, and civic engagement.

Saturday, May 6th, 4 PM

In Balance / Imbalance

Opening Reception for the museum's summer art exhibition. Come see the wonderful exhibit and talk with the artists and curators.

Saturday, May 13th, 10 AM

Mammal Day!

What do humans, bears, whales, and bats have in common? Quite a lot, it turns out! We will talk about what makes a mammal a mammal, and the adaptations we can observe in a mammal's fur, teeth, and feet to find out who they are, and what they're good at! Skulls and pelts will be available to touch, so get a real close look at mam-mal adaptations. Make a mammal craft to take home.

Saturday, May 20th, 10 AM

NISE Earth and Space Activities

NISE Earth and Space Activities

Come learn about some of the techniques used by NASA scientists to explore and understand our universe, through a series of fun and informative hands-on activities, including: Stomp Rockets * Mars Rover Game * Discovering Distant Planets * Moon Craters * and more! Plus, discover the construction and principles behind a working refractor telescope with the GALILEOSCOPE!

Saturday, May 27th, 1pm - 2:30pm

Audubon's Revenge

Let your imagination run wild as we invent fantastic new creatures by combining parts of existing animals in the museum—using colored pencils, of course!

This fun activity helps kids think about adaptations and the “creativity” we observe in some animals’ naturally selected traits. Can you invent a chimera stranger than the duck-billed platypus?

Summer Hours

May to November Wednesday, Thursday, Friday and Saturday 10 AM to 4:30 PM

Or by appointment

Saturday Morning Programs at 10 AM

Adults \$4.00 Youth Under 18 \$1.00

Group Rates

Call or email the museum to set up a group or school program.

L. C. Bates Museum

Route 201, P.O. Box 159

Hinckley, ME 04944

207-238-4250 • lcbates@gwh.org

www.gwh.org/lcbates

Visit us on [Facebook](#)



To remove your name from our mailing list, please [click here](#).

Questions or comments? E-mail us at lcbates@gwh.org or call 207-238-4250