

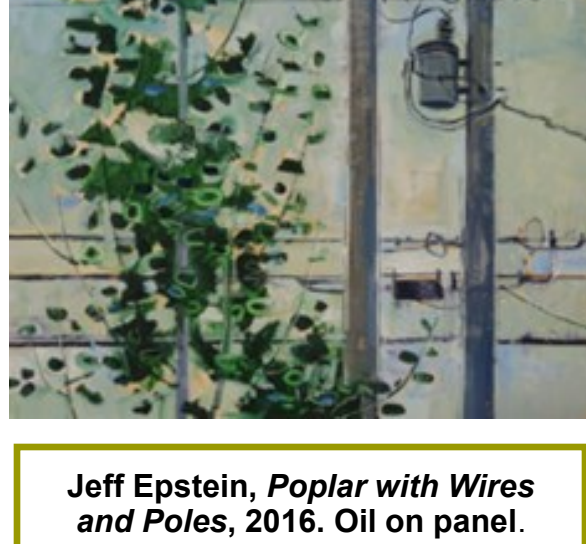
# Inside the L.C. Bates Museum

Sign Up for Special Summer Science Weeks Now

The Museum is Seeking a Part Time Educator

## Art Exhibit Opening May 6

In Balance/ Imbalance, the museum's 2023 art exhibit will be opening with a reception for the artists and curators on May 6 at 4 o'clock. All are invited to the opening. The curators, two Colby College students, Zehra Gundogdu and Anna Jaubert and their professor Veronique Plesch will introduce the exhibit. The exhibit includes Maine artists work that explores In Balance and Imbalances in our natural world and landscape.



**Jeff Epstein, *Poplar with Wires and Poles*, 2016. Oil on panel.**

## Museum Summer Camps

### Nature Camp

June 26-30th Ages 6-11. 9 AM to 2 PM  
Campers discover the wonders of nature each day and explore varied subjects including: ponds, forests, insects, birds, mammals and rocks.

### Dig Into the Past -History Camp

July 5-7th, Ages 6-12, 9 AM to 2 PM

Campers will explore and gain a better understanding about history through engaging hands on discoveries. Interactive activities will use the museum's historic collections to foster camper's understanding of our past.

### Eco Exploration! July 10 to 15, Ages 11-13, 9 AM to noon Enrollment: 6

Using aquatic ecosystems, we will spend a week learning about how to design experiments, collect data, and make conclusions about our research questions.

**Contact the Museum for Summer Camp Information**

## April 2023



## Exploring the Rock and Mineral Gallery

The mineral collection including a specimen of sulfur with many crystals, our state crystal tourmaline, beautiful quartz, calcite samples and more introduces visitors to local and world geology. You can do a self guided tour of Maine minerals to learn about our common Maine minerals.

## Newsletter Nature Fact



## Hubbard Wetland Diorama

In 1923 Charles D. Hubbard painted the background for this diorama with a river otter, martin and mink. The North American river otter is well adapted for semi-aquatic living. The mammals have thick, protective fur to help them keep warm while swimming in cold waters. They have short legs, webbed feet for faster swimming, and a long, narrow body and flattened head for streamlined movement in the water. A long, strong tail helps propels the otter through the water.

## GWH History



1920 View from School Building

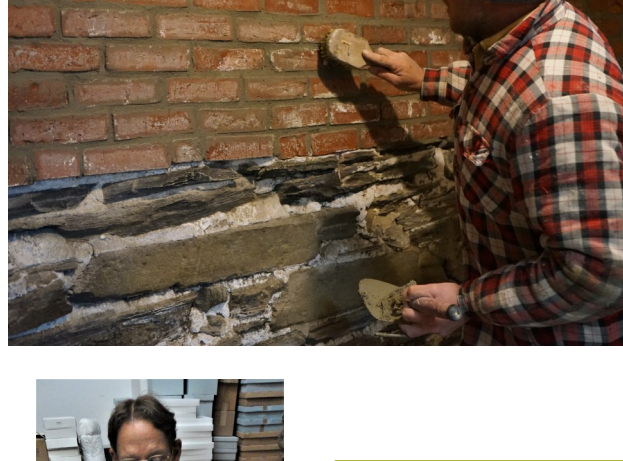
View of the Kennebec River from the Moody School building in 1920. The farm landscape had few trees. Photograph from the Good Will-Hinckley Archives.

## Museum News

The museum is seeking a part time educator to provide tours and programs for visitors including school groups. Please look at the Good Will-Hinckley website for information about applying for this fun position. If you like seeing children and adults happily learning you would enjoy the museum educator position.

The museum will again be part of NASA CAMP and provide astronomy programs, camps and activities at the museum including special hands on STEM Earth and Space Days.

## Masonry Work on the Historic L. C. Bates Building



**Conservator Ron Harvey preserving a bird specimen**

## Free Workshop on Conserving and Storing Historic Objects

Conservator Ron Harvey of Tuckerbrook Conservation will present a free Conserving and Storing Historic Objects and Materials workshop on Wednesday, June 7, 2023 from 9:30 AM to 3 PM. Call or email the museum for more information or to register for the conservation workshop. You can bring photos of your collections issues for the conservator to assess. The conservation workshop is funded by an NEH Preservation Assistance grant for Small Museums.

Needed masonry work on the museum's 1903 Romanesque Revival building is the next step for preserving parts of the interior and exterior walls. The museum is very excited to begin this long planned work to conserve the building. Do come walk around the museum building designed by Maine architect William Miller to see the repairs to the brick work and learn about the museum buildings architecture. We thank a kind donor for their support for this masonry work.

## Rosamond Purcell Photographic Print of the Lammergeier Donated to the Museum

The museum was very pleased to receive from artist Rosamond Purcell her print of a photograph she took in the museum of the Lammergeier. We took the photograph below of Rosamond's print next to the Lammergeier in the Bird Gallery. The Lammergeier print was in Rosamond's recent exhibit at the Addison Gallery in Andover, MA.



## Join the fun! Become an L.C. Bates Museum member!

### Member Benefits

- Announcements and invitations to events and exhibit openings
- Museum Newsletter
- Free admission to the museum
- 10% discount at the museum gift shop!

Call or Email the museum for information for Membership Information

Interested in making a contribution to the museum? Contact us at [lcbates@gwh.org](mailto:lcbates@gwh.org) or 207-238-4250 if would like to information about making a donation. Your donations help make the museum possible!

## April Activities:

### Saturday, April 8, 10 AM—Trail Observation Walk April is Citizen Science Month

Citizen Science Month celebrates the important contributions that can be made to scientific knowledge by everyday nature lovers. Some Citizen Science projects are major undertakings, such as the ongoing efforts of the Maine Bird Atlas. Others are smaller in scale — it helps us at the museum to know what you're seeing out on the trails! All you have to do is spend time outdoors, observing and recording what/when/ where you see things. On a self guided walks with a nature journal from the museum, document what you see and report back to the museum what insects, mammals and birds you spot in the woods of Good-Will Hinckley! Maybe you can take a photograph of them too.

### Saturday, April 15th, 10AM—Bat Day

April is a great time to observe bats, because many are just beginning to emerge from hibernation. Come see some amazing mounted bats from around the world, learn fascinating bat facts and develop a new appreciation for the order *Chiroptera* (hand-wing).

### Wednesday, April 19, 10 AM - Old Time Toys History Program—

Try rolling a hoop, play Graces, make a paper doll or top, write on a slate board and more.

### Friday and Saturday, April 21st and 22nd, 10 AM - noon—Earth and Space Days!

Fun NISE and NASA Camp learning activities. Form impact craters on the moon, launch a stomp rocket, explore the rising sea, make a cloud in a bottle and more.

### Saturday, April 29th, 10am Arbor Day -Tree Activities -

To celebrate Arbor Day, join us to learn about trees and how they grow. Learn to identify common trees. Make a tree cookie necklace to take home.

## Winter hours

Open Thursday, Friday and Saturday from 10 AM to 4 PM.

Saturday Morning Programs at 10 AM

Adults \$4.00 Youth Under 18 \$1.00

Group Rates

## L. C. Bates Museum

Route 201, P.O. Box 159  
Hinckley, ME 04944

207-238-4250 • [lcbates@gwh.org](mailto:lcbates@gwh.org)

[www.gwh.org/lcbates](http://www.gwh.org/lcbates)

Visit us on [Facebook](https://www.facebook.com/lcbates)



To remove your name from our mailing list, please [click here](#).

Questions or comments? E-mail us at [lcbates@gwh.org](mailto:lcbates@gwh.org) or call 207-238-4250