



Inside the L.C. Bates Museum

The Museum's Saturday Programs Explore Local Habitats

Pick Up a Guide to Fall Along the Trail and Go for a Fun Walk

Preservation of Sailfish



The preservation of museum objects is ongoing work in the museum. The Museum is pleased to begin the conservation of the sailfish mounted by Maine taxidermist Fred C. N. Parke and 23 historic bird mounts that are important for research. "This project was made possible in part by the Institute of Museum and Library Services. The preservation work will be completed by conservator Ron Harvey. The two year project will include educational workshops and programs about conservation and volunteer support for collections care.

Belvedere Fund Supports Brick Work

The Belvedere Fund of the Maine Community Foundation has provided \$4,000 in matching support for much needed brick and mortar work repair on the historic 1903 museum building. This will help patch and preserve the building exterior and interior walls.



Museum Happenings

The museum is preparing new Kid's Natural Science Kits for second to fourth grade classes. These include insect, forest, bird and mammal kits.

Fall Trail guides to what you might see along the trails are available at the museum. This guide and the Tree Walk may add to your trail enjoyment.

Through needed volunteer support, the museum has taken summer programs to a number of libraries and camps and offered some special trail side outdoor adventures. Children's comments about these activities amuse us all and document that they are learning from the programs. After a program, one boy enthusiastically told us that he wants to "work in a museum with lots of neat old stuff."

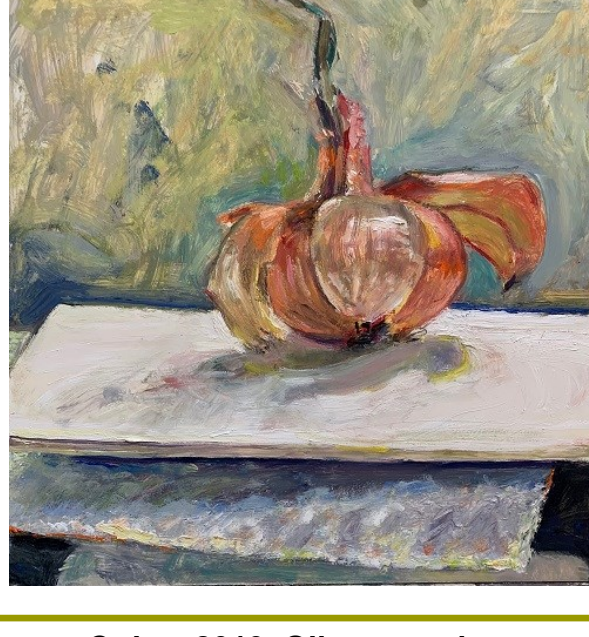
Museum Volunteers are Needed

Come join the museum team and help greet visitors and provide educational experiences for visitors from our community and schools. Volunteers are also needed to document collections and make educational Kid's Kits and programs.



Tree Branch Bubbles

Blowing bubbles through a red oak twig is amazing and fun! It proves that moisture/water can move through the roots, trunk, and limb of the tree and all the way to the leaves. Come try blowing tree bubbles on September 10 at the Fall Tree Walk.



**Onion, 2019. Oil on panel.
Leslie Bowman**

Artist Leslie Bowman's statement about her painting: The onion painting offers us a chance to look at skins and surfaces. The natural and the manmade. The way that light plays off surfaces is of interest to me as a painter. *The Onion painting is in the 2022 virtual art exhibit, Wilderness and Captivity.* The link to the art exhibit is:

<https://colby.zoom.us/j/91223042488?pwd=SWQ4K2Q2d3J3R2dydFJU2tJM2drUT09>

Newsletter Nature Fact



Hedgehog in the Museum Collection

Hedgehogs are easily recognized by their spines, which are hollow hairs made stiff with keratin. Their spines are not poisonous or barbed and, unlike the quills of a porcupine, do not easily detach from their bodies. However, the immature animal's spines normally fall out as they are replaced with adult spines. This is called "quilling".

GWH History



.Good Will boys working in the gardens that provided food for the cottages. Photograph from the GWH Archives.



Careful Collections Care

Junior Curator, Joshua is helping clean taxidermy fish collections under the direction of the conservator. His important work preserving the natural history collections is much appreciated and supports the museum.

Join the fun! Become an L.C. Bates Museum member!

Member Benefits

- Announcements and invitations to events and exhibit openings
- Museum Newsletter
- Free admission to the museum
- 10% discount at the museum gift shop!

Call or Email the museum for information for Membership Information

Interested in making a contribution to the museum? Contact us at lcbates@gwh.org or 207-238-4250 if you would like to information about making a donation. Your donations help make the museum possible!

September Outdoor Events– Weather Dependent

The museum building is temporarily closed. Come get a Kid's Kit and Explore the Trails.

Saturday, September 3, 2022 - 10 AM -Old Time Toys Activities - Make a top game, troll a hoop, play graces, write on slates and more.

Saturday, September 10, 2022 - 10 AM – Guided Fall Tree Identification Walk and activities

Saturday, September 17, 2022- 10 AM – Geology Walk– see glacier scratch marks and an erratic, checkout the local soils, and break a geode.

Saturday, September 24, 2022– 10 AM- Earth and Space Kit Activities

L. C. Bates Museum

Route 201, P.O. Box 159
Hinckley, ME 04944
207-238-4250 • lcbates@gwh.org
www.gwh.org/lcbates
Visit us on [Facebook](#)



To remove your name from our mailing list, please [click here](#).

Questions or comments? E-mail us at lcbates@gwh.org or call 207-238-4250