



Inside the L.C. Bates Museum

Fall Is A beautiful Time to Explore the Trails

The Museum was pleased to be donated Some Maine Fossils

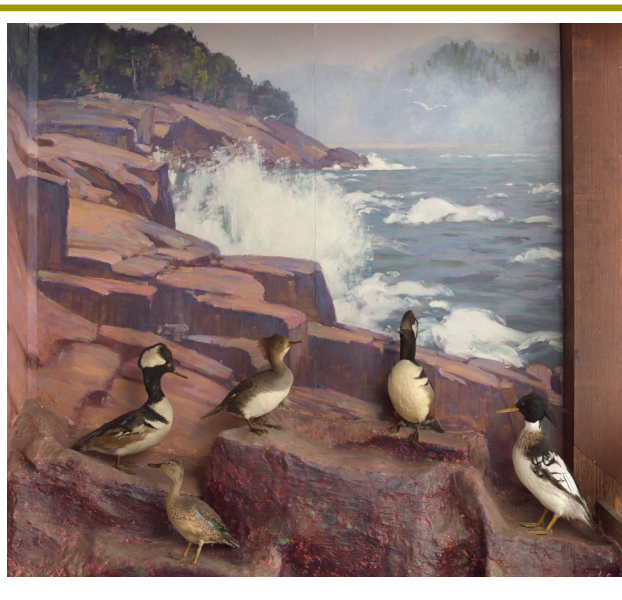
New Museum Educator



The museum and visitors are pleased to have a new museum educator, Michaela Carney. She will be greeting you at the museum and providing museum activities and programs in schools. An alumni from the University of Maine at Farmington, she is an avid supporter of education. She not only loves museums, but theatre, art, and gardening. Come in and say hello!

October is National Arts and Humanities Month

Celebrate National Arts and Humanities month at the LCB. The museum is encouraging visitors to come in and grab drawing pencils to use to explore the historic bird collections and dioramas. Many of the birds and dioramas in the collection have been preserved with support from the Institute of Museum and Library Services, a national organization that supports community museums with their humanities projects. If you don't want to draw, come photograph the museum collections including the birds.



Museum Happenings

Kindly, alumni Fay and Joyce have donated Good Will-Hinckley books and materials to the museum archives. The books and documents help tell the story of children's experiences and childcare at Good Will.

A new exhibit shelf is being built for the giant clam and whale bones in the Marine Biology Gallery. As a result, the large exhibited shell will be more safely supported and easier for visitors to see.

With fall arriving the museum's Saturday morning programs will include fall tree and geology walks and activities that explore the bird and historic collections.

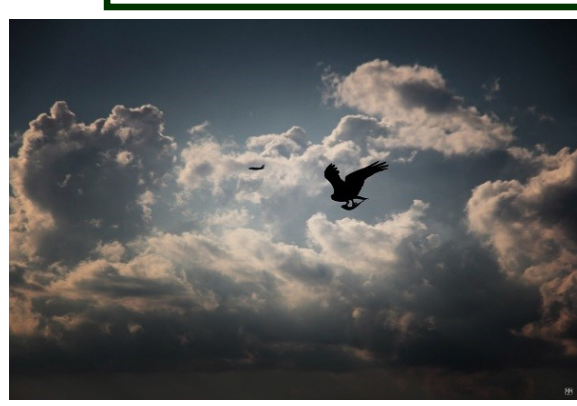
Museum Volunteers

Come join the museum team and help provide educational for visitors from our community. On the Good Will-Hinckley website or by calling the museum you can find information about applying to be a museum volunteer.



Insects in the Mattie Wadsworth collection are being photographed and entered into the collection catalog. When catalogued the collections become easily available for research, study and exhibits.

The Museum Open Winter Hours are Wednesday, Thursday and Friday from 10 AM to 3 PM. And other time by appointment for School classes and Visitors.



John Meader, *Two Birds with Passenger*, 2017. Digital photography.

John Meader said this about his work in the LCB 2022 virtual exhibit found at <https://web.colby.edu/lcbates/l-c-bates-summer-exhibition-2022/>
"A jet full of passengers whom I imagine are returning home from Europe headed for Boston; an osprey with an alewife returning to its nest after fishing in the Sebasticook River. Neither are aware of the other, but as an observer of the world, we can see both simultaneously, the gift of learning to see. As Dorothea Lange said, "[a] camera teaches you to see without a camera." I like that, I'm still learning."

Newsletter Nature Fact



Tusk Shells

The **tusk shells** or **tooth shells** are technically **Scaphopodas**. Their name comes from Ancient Greek - σκάφης *skáphē* "boat" and πούς *poús* "foot"). They are marine mollusks with a worldwide distribution. Young visitors puzzle over there shape and how they live in the oceans.

GWH History



.An early sign welcoming people to Good Will Farm for children. Image from the GWH photo archives.



Dale Budden donated a collection of special Maine fossils to the museum. The fossils document many different plants and animals that in the past inhabited the area that is now Maine. The collection will provide a scientific look into the regional geology.

Great Holiday Gifts! Come find an interesting mineral, necklace, shell, puppet, fossil, and more in the Museum Giftshop.

Join the fun! Become an L.C. Bates Museum member!

Member Benefits

- Announcements and invitations to events and exhibit openings
- Museum Newsletter
- Free admission to the museum
- 10% discount at the museum gift shop!

Call or Email the museum for information for Membership Information

Interested in making a contribution to the museum? Contact us at lcbates@gwh.org or 207-238-4250 if would like to information about making a donation. Your donations help make the museum possible!

For fall the museum is open Thursday, Friday and Saturday for 10 AM to 3 PM. Call the museum if you have any questions about the museum special tours and programs for groups and schools. The nature trails are open daily .

October Events--

All outdoor programs will move inside if it is rainy.

Saturday, October 1, 2021, 10 AM– Fall Tree Walk. Enjoy and learn about the beautiful trees in our forest on a guided tree walk. Children will receive "Tree Cookies" to use along the trails and then take home.

Saturday, October 8, 2021, 10 AM– Outdoor Old Time Toys and Games –Roll a Hoop, spin a top, and more.

Saturday, October 15, 2021, 10 AM– Tour Maine birds and make a watercolor painting of your favorite.

Saturday, October 22, 2022, 10 AM–Take a tour of the geology on the GWH campus. Learn about the Waterville Formation and local soils.

Saturday, October 29, 2022, 10 AM– For Halloween, take tour the museum with the lights turned down low. See if you can find some bats, cats and an animal skull and skeleton.

L. C. Bates Museum
Route 201, P.O. Box 159
Hinckley, ME 04944
207-238-4250 • lcbates@gwh.org
www.gwh.org/lcbates
Visit us on [Facebook](https://www.facebook.com/lcbates)



To remove your name from our mailing list, please [click here](#).

Questions or comments? E-mail us at lcbates@gwh.org or call 207-238-4250