

Inside the L.C. Bates Museum

Come Enjoy a 10 AM Saturday Morning Children’s Program

For the Holiday the Museum Gift Shop Has Minerals, Puppets and More

Sailfish Conservation Continues



With support from IMLS, Conservator, Ron Harvey is continuing work on preserving the sailfish mounted by Maine taxidermist Fred C. N. Parke. Visitors have enjoyed seeing and learning about this careful conservation process. Conserving the museum’s historic collections helps the museum provide educational activities about natural science for visitors. As part of this project, 100 year old bird specimens will be conserved by the conservator so they can be exhibited.

Looking at the Sun Inspires Wonder.



Viewing the sun safely, usually for the first time, through special glasses, amazes students. They all notice it’s shape, size and color. They like learning about their beautiful star and how it provides them with heat and light.



A small Adm. Robert Peary collection of 123 eggs is important for scientific study. The eggs include some from his travels north in 1909 and others from Maine. The museum is working to raise funding to house this collection in acid free containers and have it more available for research and exhibition.

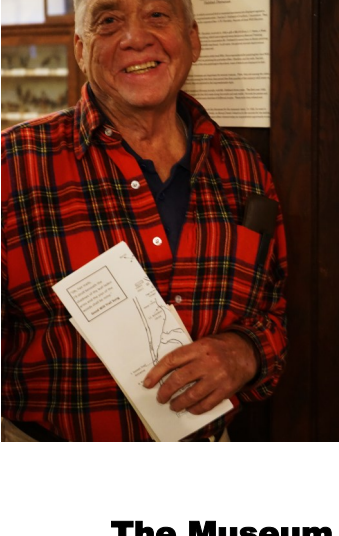
Museum Happenings

The museum has bird activity kits for lower elementary school age children. Call ahead to arrange a time to pick up a kit.

Behind the scenes, historic GWH photos and documents are being cataloged and safely rehoused. This work will make the collections available for exhibits and study.

Museum Volunteers

Come join the museum team and help provide educational tours and programs for visitors from our community.



Doug Fernald, a past museum curator came to visit the museum on the day 45 years after the first day he worked at the museum. He had wonderful stories to share about the museum visitors, collections and history.

November 2022

Try A Scavenger Hunt When You Visit

School classes and families visiting the museum can use fun scavenger hunts such as Maine Animals in Winter or a Raptor Hunt to learn about the birds and animals. Children like the hunts so much that they usually want to explore the exhibits with several hunts in hand.

Newsletter Nature Fact



Petrified Wood

Petrified wood is a fossil. It forms when plant material is buried by sediment and protected from decay due to oxygen and organisms. Then, groundwater rich in dissolved solids flows through the sediment, replacing the original plant material with silica, calcite or pyrite or another inorganic material. The result is a fossil of the original woody material that often exhibits preserved details of the bark, wood, and cellular structures.

GWH History



.Good Will boys gather pumpkins for making many pies in the cottages. Photo from the GWH Archives.



Taking Rock Samples for Science

Amber Whittaker, (Senior Geologist Maine Geological Survey) and her grad-student assistant took samples of the local slate bedrock to determine its history. Their work involves looking at detrital zircon signatures in rocks of the Vassalboro Group on the east side of the conceptual Messalonskee Lake thrust fault, and rocks of the Sangerville Formation on the west side of the conceptual fault, to determine whether a real difference exists in these two rock units that look identical on the ground. The Good Will-Hinckley trails are mapped as the Sangerville Formation on the Bedrock Geologic Map of Maine.

The Museum Open Hours are Thursday, Friday and Saturday from 10 AM to 3 PM. And other times by appointment.

Join the fun! Become an L.C. Bates Museum member!

Member Benefits

- Announcements and invitations to events and exhibit openings
- Museum Newsletter
- Free admission to the museum
- 10% discount at the museum gift shop!

Call or Email the museum for information for Membership Information

Interested in making a contribution to the museum? Contact us at lcbates@gwh.org or 207-238-4250 if would like to information about making a donation. Your donations help make the museum possible!

For fall the museum is open Thursday, Friday and Saturday for 10 AM to 3 PM. Call the museum if you have any questions about the museum special tours and programs for groups and schools. The nature trails are open daily .

November Activities:

November 5, Saturday at 10am- Animals in Winter Tour- What do animals do during winter? How have they prepared for winter? Come on a tour of Maine animals in winter! What are all the animals out there doing to survive? Not many of them are truly hibernators, so what ingenious methods do they have to help them thrive in winter?

November 12, Saturday at 10 AM— Capturing A Bird On Paper

Join us to tour the bird gallery to look at bird adaptations and then find a bird or two you would like to draw. Make a colorful drawing to take home

November 19. Saturday at 10 AM—Explore Mammals– Carnivores, Herbivores and Omnivores Look at mammals and their skulls and teeth to learn how they are adapted to eat different foods. Look at their hoofs and feet to learn about how they are adapted to help mammals. Make a mammal craft to take home and a track game.

November 26 Saturday at 10 AM—Old Time Toys Take a trip through history and explore some of the popular games kids played a hundred years ago!

L. C. Bates Museum

Route 201, P.O. Box 159
Hinckley, ME 04944
207-238-4250 • lcbates@gwh.org
www.gwh.org/lcbates
Visit us on [Facebook](#)



To remove your name from our mailing list, please [click here](#).

Questions or comments? E-mail us at lcbates@gwh.org or call 207-238-4250