

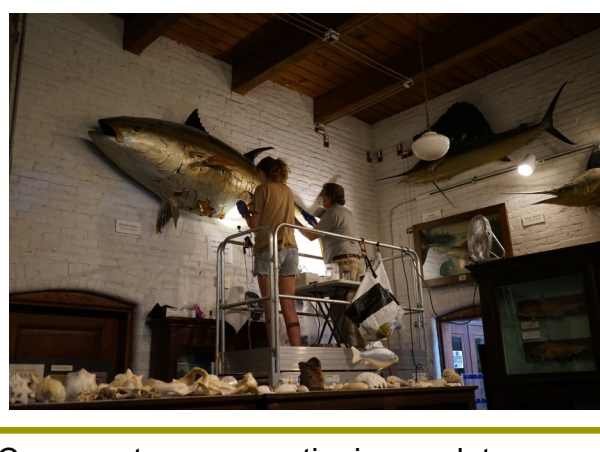


## Inside the L.C. Bates Museum

### Conservation of the Tuna Continues

#### Part Time Educator Needed at the Museum

##### Fascinating Tuna Preservation



Conservators are continuing work to preserve the Atlantic bluefin tuna mounted by Fred C. N. Parke. The tuna came to the museum in 1943 and has been on exhibit in the Marine Biology Gallery. Tunas are oily fish. Oil has continued to drip from the historic mount. The restoration project should solve the tuna's oil issues.



##### Brick and Mortar Preservation

Needed matching funding is being raised to preserve the historic museum building's bricks and mortar. The project includes securing the brick work and slate tops on the museum vents. When the building was designed and built by William R. Miller in 1903 as a Manual Training School for Boys, the vents were designed to remove heat caused by the boiler that ran the industrial equipment. They still help cool the museum on a hot day. Brick and mortar repair is also needed on the exterior and interior museum walls.

##### Museum Happenings

The museum is working to create a Natural History Museum Resource Lending Library that will support learning at the museum and in the classroom. The educational library boxes will include hands on activities and game sheets. The boxes include a track box, fox box, bird box, squirrel box, skunk box and more.

Thanks to a very generous and much appreciated donor, contractor Steve Dionne has begun work on the preservation of three additional exterior windows in the Marine Biology Gallery. Along with being historically preserved, the windows will be operational.

##### Museum Volunteers and a part time Educator Are Needed

Come join the museum team and help provide educational for visitors from our community. On the Good Will-Hinckley website you can find information about applying for the part time educators position at the museum.



##### Mammal and Bird Diorama Videos

Videos of the Charles D. Hubbard mammal and bird dioramas that show them in their gallery settings have been created and shared on YouTube under L. C. Bates Museum. Colby College Summer Arts and Humanities student Lia Solingen created the gallery videos. The videos will support off site classroom learning and share the museum with people who can not travel to the museum.

##### August 2022



##### Meader's Painting in Summer Exhibit

Abbott Meader's painting, *Against All Odds the Blind Trout Fights Its Way Upstream*, 2006. is included in the Museum's summer virtual art exhibit, *Wilderness and Captivity*. The link to the art exhibit is: <https://colby.zoom.us/j/91223042488?pwd=SWQ4K2Q2d3J3R2dydFJlU2tJM2drUT09>

Abbott writes about his painting:

The blinded trout must use means other than vision to find its way. The stream is its only world. Is this freedom, or is it captivity? Both? There are obstacles and dangers. Some are natural, while some come from beyond the trout's understanding. Nevertheless, bound to its life purposes, the trout is compelled to strive onward, still confident in its ability to choose and move through the waters. Isn't this freedom?

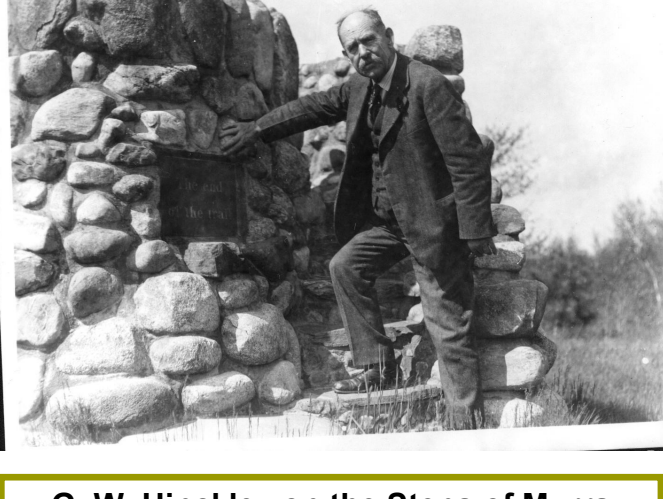
##### Newsletter Nature Fact



##### Charles D. Hubbard Bobcat Diorama 1922

The **bobcat** (*Lynx rufus*) is a medium-sized cat native to North America. It has distinctive black bars on its forelegs and a black-tipped, stubby (or "bobbed") tail, from which it derives its name. Hubbard painted a scene in Hinckley where bobcats were seen for the background of this diorama. Young visitors enjoy the bobcat diorama.

##### GWH History



##### G. W. Hinckley on the Steps of Murray Tablets

The 1920 monument was dedicated to Adirondack Murray who Hinckley viewed as the "Father of the Outdoor Movement." It was built to resemble an early pulpit with stairs leading to the top.

##### Kid's Kits

Bird, Insect and Leaf Kid's Kits for elementary age students are available to be picked up at the museum. Please call the museum to plan a time to receive your kit.

**Join the fun! Become an L.C. Bates Museum member!**

##### Member Benefits

- Announcements and invitations to events and exhibit openings
- Museum Newsletter
- Free admission to the museum
- 10% discount at the museum gift shop!

Call or Email the museum for information for Membership Information

Interested in making a contribution to the museum? Contact us at [lc Bates@gwh.org](mailto:lc Bates@gwh.org) or 207-238-4250 if you would like to information about making a donation. Your donations help make the museum possible!

##### August Outdoor Events-- Weather Dependent

**The museum building is temporarily closed.**

**Saturday, August 6, 2022 10 AM--- Geology Tour of the Campus-** Learn about our local landforms and Maine Minerals.

**Saturday, August 13, 2022 10 AM - Earth and Space/NASA CAMP Activities -** Earth and Solar System Activities and games

**Saturday, August 20, 2022 --- 10 AM Tree Identification Walk--** Learn to use leaves and bark to identify trees and make a tree cookie necklace.

**Saturday, August 27, 2022 --- 1 PM Old Time Toys Activities--** Roll hoops, make a top game, play Graces, and more.

##### L. C. Bates Museum

Route 201, P.O. Box 159  
Hinckley, ME 04944

207-238-4250 • [lc Bates@gwh.org](mailto:lc Bates@gwh.org)

[www.gwh.org/lcbates](http://www.gwh.org/lcbates)

Visit us on [Facebook](#)



To remove your name from our mailing list, please [click here](#).

Questions or comments? E-mail us at [lc Bates@gwh.org](mailto:lc Bates@gwh.org) or call 207-238-4250