

Inside the L.C. Bates Museum

Volunteers are Needed to Help with Museum Programs

Saturday Morning Summer Programs Explore Science

Collection Preservation



Historic Taxidermy Conservation

Conservator Ron Harvey is continuing work on conserving historic Fred C. N. Parke fish mounts, including the pictured houndfish, and birds in the museum collection. The careful preservation work includes both fresh water and ocean fish.

Museum Happenings

The museum is working on carefully cataloging and sharing the GWH archives and using them to provide needed information to alumni and individuals studying regional Maine history. Recently, information about the Roosevelt Monument on the Good Will - Hinckley campus was provided to the Theodore Roosevelt Maine Heritage Trail. Check out their site to learn more about Roosevelt's Maine connections and the campus monument.

Museum Volunteers and a part time Educator Are Needed

Come join the museum team and help provide educational experiences for our community. Visit the Good Will-Hinckley website at www.gwh.org to learn more about these opportunities.



Three Windows Preserved

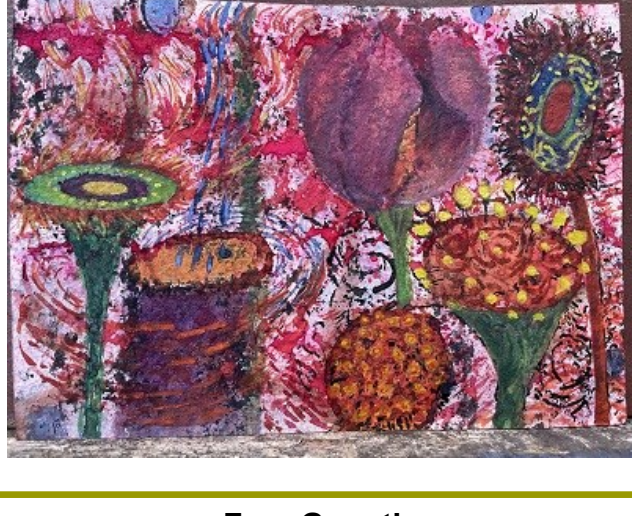
The work preserving three arched windows on the front of the building is complete. We can now safely open the windows and their moldings have been restored. We are now working to raise funding to complete the preservation of additional historic museum windows.



Colby Arts and Humanities Interns

The museum is pleased to have Colby College Arts and Humanities Interns helping, mostly virtually, to research and document collections and create children's natural science activities and discovery boxes. Their work will help the museum provide information for young visitors. The internships provide the students, including Lila pictured above, with valuable experiences that provide insights into work in the museum field.

July 2022



Free Growth

Alan Crichton's, 2021, 5 x 7 inch watercolor on paper, Free Growth, is in the summer virtual art exhibit, *Wilderness and Culture*. *What a strong and interesting painting. Use this link to view the entire art exhibit:*

<https://colby.zoom.us/j/91223042488?pwd=SWQ4K2Q2d3J3R2dydFJU2tJM2drUT09>

Newsletter Nature Fact



Charles D. Hubbard 1924 American Bittern Diorama

The American Bittern is a thickset heron with all-over bright, pale, buffy-brown plumage covered with dark streaks and bars. The Bittern is a well camouflaged bird, that is very difficult to see, as it moves silently through reeds at water's edge, looking for fish.

GWH History



Sunrise Fireplace

G. W. Hinckley standing near Sunrise Fireplace that was built in 1933. It had plaques that included quotes from literature that described four footed animals.



A new museum soil exhibit and visitor brochure are being developed by David Turcott, a retired soil scientist.

Friends of L.C. Bates Museum Annual Appeal 2022 every gift to the L.C. Bates Museum benefits our Maine community. Please consider contributing, and know that your gift of any amount is greatly appreciated and tax -deductible.

Name: _____ Email Address: _____

Address: _____

Home Phone: _____

I want to make a donation for the 2022 Friends of L.C. Bates Museum Annual Appeal for the amount of: _____

Enclosed is a check in the amount of \$ _____. Please make checks payable to Friends of L.C. Bates Museum

Thank you for Supporting the L.C. Bates.

Please mail your kind donation to:

Friends of L.C. Bates Museum, P. O. Box 159, Hinckley, ME 04944, 207-238-4250, lcbates@gwh.org

Join the fun! Become a Friends of L.C. Bates Museum member!

Member Benefits

- Announcements and invitations to events and exhibit openings
- Museum Newsletter
- Free admission to the museum
- 10% discount at the museum gift shop!

[Click here](https://www.gwh.org/programs/lc-bates-museum/), go to the museum's website <https://www.gwh.org/programs/lc-bates-museum/>

or call the museum for information and a membership request form.

Interested in making a contribution to the museum? Contact us at lcbates@gwh.org or 207-238-4250 if would like to information about making a donation to the museum. Your donations help make the museum possible!

July Outdoor and Virtual Events– Weather Dependent

Saturday, July 2, 2022- 10 AM -Old Time Toys Activities - Make a top game, troll a hoop, play Graces, write on slates and more.

Saturday, July 9, 2022- 10 AM – Guided Tree Identification Walk and activities

Saturday, July 16, 2022- 10 AM – Pond Study– Visit the Pond with Nets in Hand

Saturday, July 23, 2022– 10 AM- Earth and Space Kit Activities for Children

L. C. Bates Museum

Route 201, P.O. Box 159
Hinckley, ME 04944

207-238-4250 • lcbates@gwh.org

www.gwh.org/lcbates

Visit us on [Facebook](https://www.facebook.com/lcbates)



To remove your name from our mailing list, please [click here](#).

Questions or comments? E-mail us at lcbates@gwh.org or call 207-238-4250