

Inside the L.C. Bates Museum

Wilderness and Culture Virtual Opening Art May 7

Join Outdoor Programs In May

Art Virtual Opening May 7

On Saturday, May 7, 2022, at 5 PM the L.C. Bates summer virtual exhibit *Wilderness and Culture* will open with a virtual introduction to the exhibit by the curators and talks by exhibiting artists. The exhibit curators, Maria Minuesa and Caroline Scarola are Colby students who have been guided by Professor Véronique Plesch. The link to the art opening is: <https://colby.zoom.us/j/91223042488?pwd=SWQ4K2Q2d3J3R2dydFJU2tJM2drUT09>



The 2021 Fresco by Barbara Sullivan titled *Cat Looking out a Window*, will be sure to interest viewers young and old.

Museum Happenings

The museum was donated a collection of corals from Margaret Buschmann. They had been collected in the Philippines by her father in the 1940's. They add to the variety of the museum's coral collection.

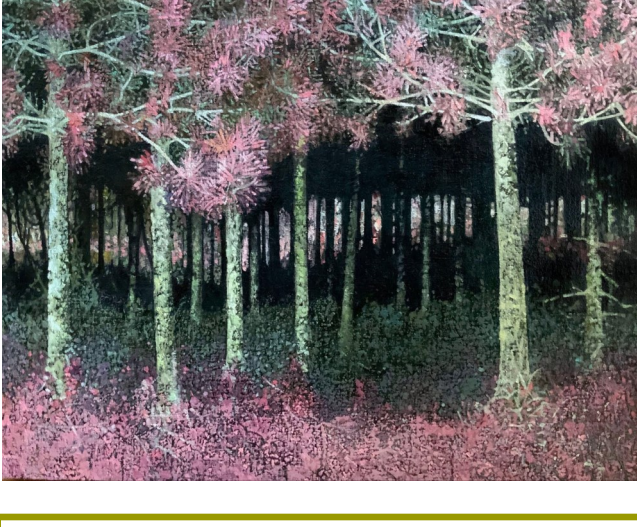
The museum continues to provide natural science hands-on kits to elementary school children. The families and teachers report the kits well support experiential learning.



Dogs love and enjoy checking out everything along the Good Will-Hinckley Trails. Come bring your dog for a hike on the trails and see what they find of interest. You both might see a trail side animal or birds.

New Hunt for Museum Mammals

Volunteer Don is taking detailed photographs of the heads and faces of interesting mammals in the museum. His photos will be used for a scavenger hunt for young visitors. It is hoped the hunt will encourage learning about some of the often overlooked small mammals exhibited in the museum such as the tenrec pictured on the right. The museum and its visitors appreciate the work of volunteers to support museum and trail side learning. The tailless tenrec (*Tenrec ecaudatus*), also known as the common tenrec is a native to Madagascar, but found in other subtropical places. It is only 10 to 15½ inches long, but has an amazing long face. Look for it when you next visit the museum galleries.



Kris Engman's painting, *Bangor Pines*, 2020. Oil on linen on panel, 18 x 24 in is included in the virtual summer L. C. Bates Art Exhibit.

Newsletter Nature Fact



The Museum's hundred year old Charles D. Hubbard mammal dioramas include one with a non Maine animal. It is a diorama of a hyena with an Egyptian background painting that includes pyramids. The background painting depicts evening and shows the hyena standing with the remains of his prey.

Spotted hyenas Fun Fact: Hyenas make a variety of vocalizations, including wailing calls, howling screams, and the well-known "laughter," which can be heard up to three miles away and is used to alert other clan members of a food source.

GWH History



Spring Hoeing in the Good Will Garden

Museum Volunteers Are Needed

Come be part of the museum team as we work to provide educational experiences, pick up the trails, fundraise and catalog amazing collections. It is fun to work with the amazing museum collections and visitors. Please call or email the museum to learn more about volunteering.

NASA CAMP

As part of the NASA CAMP program the museum will offer a morning Earth and Space Camp on Monday to Friday the week of August 1, 2022. Please contact the museum to register for the camp.

Tailless Tenrec



Friends of L.C. Bates Museum Annual Appeal 2022 every gift to the L.C. Bates Museum benefits our Maine community. Please consider contributing, and know that your gift of any amount is greatly appreciated and tax -deductible.

Name: _____ Email Address: _____
Address: _____
Home Phone: _____

I want to make a donation for the 2022 Friends of L.C. Bates Museum Annual Appeal for the amount of: _____
Enclosed is a check in the amount of \$ _____. Please make checks payable to Friends of L.C. Bates Museum

Thank you for Supporting the L.C. Bates.

Please mail your kind donation to:

Friends of L.C. Bates Museum, P. O. Box 159, Hinckley, ME 04944, 207-238-4250, lcabates@gwh.org

Join the fun! Become a Friends of L.C. Bates Museum member!

Member Benefits

- Announcements and invitations to events and exhibit openings
- Museum Newsletter
- Free admission to the museum
- 10% discount at the museum gift shop!

[Click here](#), go to the museum's website www.gwh.org/lcbates or call the museum for information and a membership request form.

Interested in making a contribution to the museum? Contact us at lcabates@gwh.org or 207-238-4250 if you would like to make a contribution to the museum. Your donation will help us keep the museum open and the museum possible!

May Outdoor and Virtual Events- Weather Dependent

Saturday May 7, 2022- 10 am- Take a Wildflower Walk, May is National Flower Month! Come take a walk on our trails. Do a coloring page of one of Maine's native flowers.

Saturday, May 7, 2022- 5 PM- Virtual Opening of the Summer art Exhibit

Saturday, May 14, 2022- 10 AM Earth and Space Activities Exploration—Try NISE Kits.

Saturday May 21, 2022- 10 AM Bird Kit Activities. Children can explore a bird kit and make a small hummingbird feeder to take home.

Saturday May 28, 2022- 10 AM Pond Explorations and Frog Celebrations- Come explore the pond with nets in hand and celebrate all the lovely amphibians in our pond.

Museum Hours and Admission Fees

When We Can Reopen in June

April to Mid-November - Wednesday, Thurs., Fri. & Sat.: 10am to 4:00 pm and other times by appointment

November to March - Open by appointment or chance, usually Wed. - Sat. 9am to 4:30pm

Adults \$3.00
Youth Under 18 \$1.00
Group Rates

Become a museum member and get free admission!

L. C. Bates Museum

Route 201, P.O. Box 159
Hinckley, ME 04944

207-238-4250 • lcabates@gwh.org
www.gwh.org/lcbates
Visit us on [Facebook](#)



To remove your name from our mailing list, please [click here](#).

Questions or comments? E-mail us at lcabates@gwh.org or call 207-238-4250