



## Inside the L.C. Bates Museum

### Happy New Year

### Thank You to All Who Support the Museum

Donors and Volunteers have and continue to provide very meaningful help for the museum.

Friends, donors and volunteers are the heart of the L.C. Bates Museum family and kindly support its educational, exhibit and archival work. We thank them all for their thoughtful help. Community volunteers have researched and catalogued objects and GWH archives. Colby students have curated the summer art exhibit, remotely documented objects and made guides for children. Many groups from FedCap to Living Innovations and college students have assembled parts for thousands of Kid's Kits. Museum exhibits and storage spaces are being updated by volunteer efforts. Financial donations are funding museum building repairs. They also fund educational kits and Nature Nuggets that support classroom and family learning.

THANK YOU TO ALL



Winter brings a new, sparkling beauty to the landscape.

#### Four Colby JanPlan Interns

Four Colby JanPlan students will work remotely researching collections and/or creating activities for children. They will support developing new ways to use the collections to teach environmental science and to interpret historic collections. The museum appreciates this much-needed support and looks forward to the new learning experiences and research they will create for visitors.

### Museum Happenings

The Museum is pleased to receive \$3,500 from The Maine Humanities Council and the National Endowment for the Humanities (NEH) as part of the American Rescue Plan Act of 2021. This will support humanities activities and collections at the museum.

Historic GWH artifacts, such as early dental equipment, historic tools used in the industrial arts program, household items used in the cottages, toys and letters are being cleaned and archivally stored.

**The Museum building is temporarily Closed due to Covid Safety Issues. Do come to the museum to enjoy the trails. For elementary school age children, call ahead to plan a time to receive a Bird Kid's Kit to explore at home.**



Follow the hikers' tracks for a fun forest walk on the GWH Trails. Watch for animal tracks and scat!

#### .Museum Building Improvements 2021

Work has been completed on the museum skylights and well conserved the building, using the building guidelines of the Maine Historic Preservation. Nine original windows and their moldings were also preserved and are now working. These projects maintain the architecture of the 1903 Romanesque Revival building. In 2022, the focus will be on mortar repair and additional window restorations.



### January 2022

#### Year of the Tuna's Conservation



Ron Harvey taking samples of the paints on the tuna

The large Atlantic Bluefin Tuna mounted in the 1930's by Fred C. N. Parke will be preserved this year by conservator Ron Harvey. To begin the project, he is taking samples of the paints, glues, etc. that Parke used to prepare the mount. We look forward to learning from this process. We also plan to provide learning experiences about tuna for visitors, especially children. The tuna is scientifically and historically considered an important specimen. The tuna conservation is supported by the Institute of Museum and Library Services.

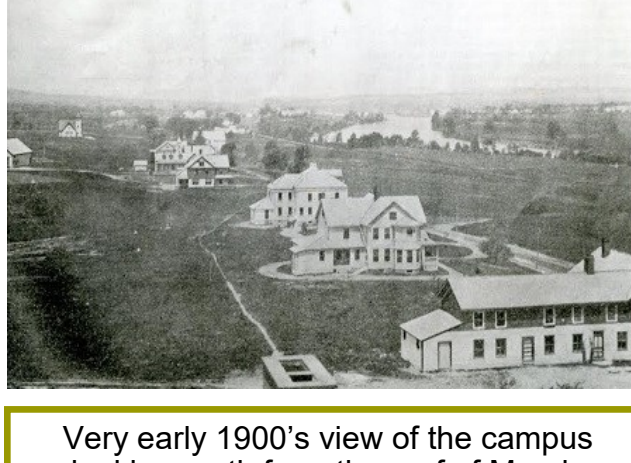
#### Newsletter Nature Fact



#### Drawer of Wadsworth Collection

**Hemaris diffinis:** Snowberry Clearwing, **Hemaris thysbe:** Hummingbird Clearwing, **Amphion floridensis:** Nessus Sphinx, **Dolba hyloeus:** Pawpaw Sphinx, **Hyles gallii:** Gallium Spinx, and other specimens in the Mattie Wadsworth collection document insects 100 years ago. They have their original collection information and are being cataloged by volunteers.

#### GWH History



Very early 1900's view of the campus looking north from the roof of Moody School. Note how few trees there are on the former farmland. Can you find Moody Chapel and name the other buildings. Photograph from the GWH Archives.



#### Kid's Kits Continue to be Useful

With volunteer help, we continue to provide Kid's Kits and tail side activities for classes and families learning. We have learned that Bird, Maine History and Leaf kits are the most in demand.

#### Needed—Museum Volunteers

The museum needs help with many activities including trail pickup, assembling Kid's Kits, fund raising and cataloging collections. Please call the museum to learn more about the interesting volunteer opportunities.



Mini dioramas are one of the popular craft activities in the Bird Science Kid's Kits.

**Friends of L.C. Bates Museum Annual Appeal 2022** every gift to the L.C. Bates Museum benefits our Maine community. Please consider contributing, and know that your gift of any amount is greatly appreciated and tax -deductible.

Name: \_\_\_\_\_ Email Address: \_\_\_\_\_

Address: \_\_\_\_\_

Home Phone: \_\_\_\_\_

I want to make a donation for the 2022 Friends of L.C. Bates Museum Annual Appeal for the amount of: \_\_\_\_\_

Enclosed is a check in the amount of \$ \_\_\_\_\_. Please make checks payable to Friends of L.C. Bates Museum

Thank you for Supporting the L.C. Bates.

Please mail your kind donation to:

Friends of L.C. Bates Museum, P. O. Box 159, Hinckley, ME 04944, 207-238-4250, [lbates@gwh.org](mailto:lbates@gwh.org)

Check out the educational Nature Nugget Videos at [Colbycommunity/lcbates](http://Colbycommunity/lcbates)

Come Take a Winter Walk on the GWH Trails with a Tree Guide in Hand

#### Join the fun! Become a Friends of L.C. Bates Museum member!

##### Member Benefits

- Announcements and invitations to events and exhibit openings
- Museum Newsletter
- Free admission to the museum
- 10% discount at the museum gift shop!

[Click here](#), go to the museum's website [www.gwh.org/lcbates](http://www.gwh.org/lcbates) or call the museum for information and a membership request form.

Interested in making a contribution to the museum? Contact us at [lbates@gwh.org](mailto:lbates@gwh.org) or 207-238-4250 if would like to information about making a donation to the museum. Your donations help make the museum possible!

#### Museum Hours and Admission Fees When We Can Reopen

April to Mid-November - Thurs., Fri. & Sat.: 10am to 4:00 pm

Sun.: 1pm to 4:00 pm and other times by appointment

November to March - Open by appointment or chance, usually

Wed. - Sat. 9am to 4:30pm and Sunday 1 to 4:30 PM

Adults \$3.00

Youth Under 18 \$1.00

Group Rates

*Become a museum member and get free admission!*

#### L.C. Bates Museum

Route 201, P.O. Box 159  
Hinckley, ME 04944

207-238-4250 • [lbates@gwh.org](mailto:lbates@gwh.org)

[www.gwh.org/lcbates](http://www.gwh.org/lcbates)

Visit us on [Facebook](#)



To remove your name from our mailing list, please [click here](#).

Questions or comments? E-mail us at [lbates@gwh.org](mailto:lbates@gwh.org) or call 207-238-4250