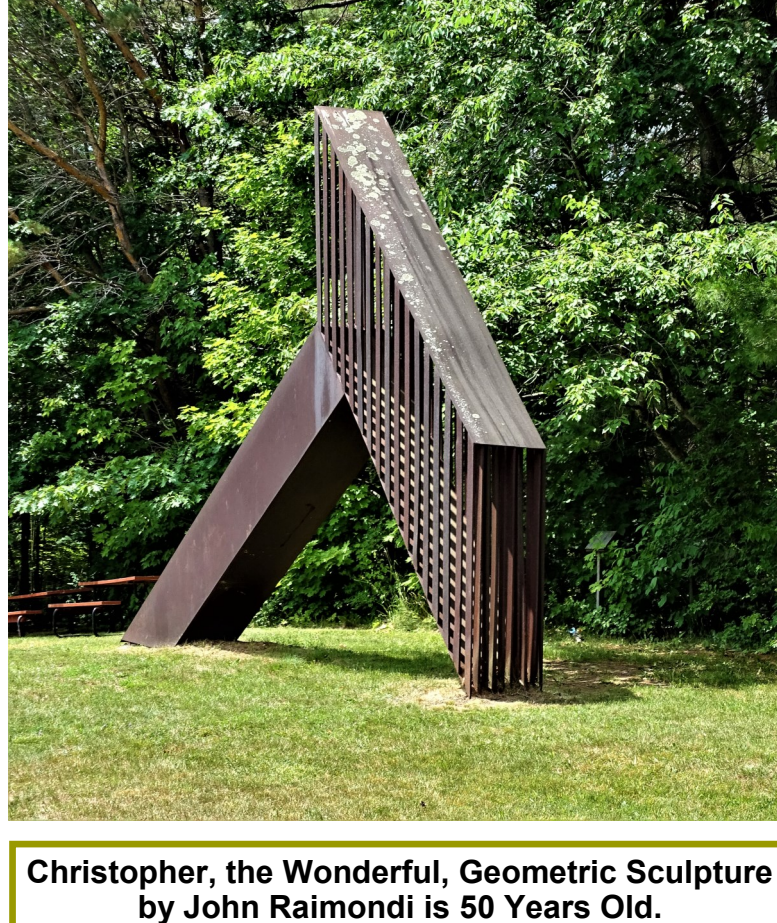


Inside the L.C. Bates Museum

The Sculpture Christopher is 50 Years old, Come Celebrate
Window Preservation is Continuing

Christopher Engages All Visitors



Christopher, the Wonderful, Geometric Sculpture by John Raimondi is 50 Years Old.

John Raimondi, a world-renowned artist and collector created Christopher. During the summer of 1971, he was the artist in residence at the Haystack-Hinckley School of Crafts on the campus of Good Will-Hinckley. Christopher was designed and built by John Raimondi and is the second in Raimondi's series of geometric minimalist sculptures that he created during the 1970s. Raimondi, then 24, lived on campus and students had the opportunity to work with him instead of attending their regular classes. Only one student, Christopher Desmond, took up the offer to assist the sculptor. Raimondi taught him how to weld and involved him in the creation of his sculpture. Desmond's dedication and determination inspired Raimondi to name the sculpture after him. Since his time at the Haystack-Hinckley School, Raimondi has gone on to have a successful career as a monumental sculptor.

August 28, 2021 at 1 PM -You are Invited to Visit the Sculpture Christopher to Learn about its History and Celebrate it being a part of the GWH campus for 50 Years.



Holly Berry, *Pollinator Paisley*, basswood relief carving, 12 x 8 x 2 in., 2018 is included in the museum's summer virtual exhibit. Visit the L. C Bates Summer Virtual show, Marks and Tracks. It can be found online at web.colby.edu/lcbates/home/summer-exhibition-2021

Museum Happenings

Three large windows in the Marine Biology Gallery are now preserved. The windows and their moldings are now solid and painted in their original colors. Monday, work is beginning on the office windows.



The museum thanks a generous and kind donor for making this historic preservation work possible. Please consider also helping preserve the 1903 Romanesque Revival museum building.



Bird and Fish taxidermy are being preserved by conservator Ron Harvey with support from an IMLS grant.

Support the Museum and the Environment

Purchase a reusable Hannaford Shopping Bag at the Skowhegan Hannaford's Store during August and/or October for \$2.50 and \$1 will be donated to the museum. This bag donation funding will be used to support programs for children and families in our community.

The L. C. Bates Museum is seeking a new part time educator who enjoys working with visitors to provide natural history learning experiences. For additional information about the position, please check the GWH website.

August 2021



John Raimondi sculptures of Christopher. When viewing the bronze Christopher sculpture in the museum, you may look out the window and see the outdoor sculpture of Christopher.



Earth and Space Activity Fun

On Fridays August 6 and 13 at 1 PM NISE Earth and Space programs about our sun and its planets will be offered at the museum. Come try sending up a stump rocket, trying Galileo scope, making craters, exploring moon phases and more.

Newsletter Nature Fact

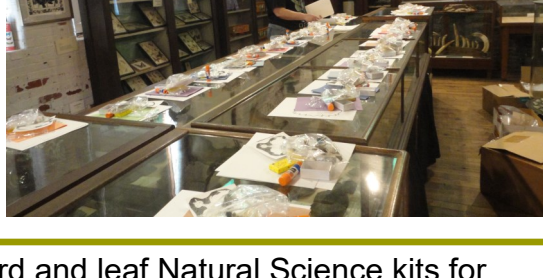


The original label on this butterfly in the Mattie Wadsworth collection reads: Argynnis myrina Ceram.

GWH History.



GW students Viewing the Charles D. Hubbard Moose Diorama in the Mammal Gallery. Photograph from the GWH Archives.



Bird and leaf Natural Science kits for elementary school age children are being assembled for regional school classes.

We Will Miss Educator Abbie Lyles



The Museum thanks Abbie Lyles, our museum part time educator and congratulates her on graduating from Unity College and her new position as a school teacher. She will still support the museum as a committee member with art, naturalist and environmental science knowledge.

Friends of L.C. Bates Museum Annual Appeal 2021 very gift to the L.C. Bates Museum benefits our Maine community. Please consider making a contribution, and know that your gifts of any amount are greatly appreciated and tax deductible.

Name: _____ Email Address: _____

Address: _____

Home Phone: _____

I want to make a donation for the 2021 Friends of L.C. Bates Museum Annual Appeal for the amount of: _____

Enclosed is a check in the amount of \$ _____ Please make checks payable to Friends of L.C. Bates Museum

Thank you for Supporting the L.C. Bates.

Please mail your kind donation to:

Friends of L.C. Bates Museum, P. O. Box 159, Hinckley, ME 04944, 207-238-4250, lcbates@gwh.org

Upcoming Events

All outdoor programs are dependent on the weather. Programs will be canceled if it is rainy.

Monday, August 2, 2021 — 1PM Nature Journaling—Focused on Birds and Trees

Friday, August 6, 2021—1 PM to 2:30 PM Earth and Space NASA CAMP program — Our Solar System

Monday, August 9, 2021 — 1 PM Pond Visit With Nets in Hand

Friday, August 13, 2021 — 1 PM to 2:30 PM Earth and Space NASA CAMP program—Amazing Astronomy

Saturday, August 21, 2021 — 1 PM Old Time Toys Activities— Roll hoops, make a top game, play Graces, and more.

Saturday, August 28, 2021 — 1 PM Come Celebrate Christopher's 50th Year. Learn about the history of the John Raimondi sculpture behind the museum, receive a handout about the story of the creation of the sculpture, create an artwork and enjoy birthday cake. The sculpture Christopher is enjoyed by many visitors to the museum and trails. This activity will be a chance to understand its story.

Free Guided Tree walks for 14 species can be picked up at the museum.

Families can check out a bird study backpack to use along the trail .

Leaf Kits are available for elementary school age hikers.

Join the fun! Become a Friends of L.C. Bates Museum member!

Member Benefits

- Announcements and invitations to events and exhibit openings
- Museum Newsletter
- Free admission to the museum
- 10% discount at the museum gift shop!

[Click here](http://www.gwh.org/lcbates), go to the museum's website www.gwh.org/lcbates or call the museum for information and a membership request form.

Interested in making a contribution to the museum? Contact us at lcbates@gwh.org or 207-238-4250 if you would like information about making a donation to the museum. Your donations help make the museum possible!

Museum Hours and Admission Fees When We can Reopen

April to Mid-November - Thurs., Fri. & Sat.: 10am to 4:00 pm
Sun.: 1pm to 4:00 pm and other times by appointment

November to March - Open by appointment or chance, usually
Wed. - Sat. 9am to 4:30pm and Sunday 1 to 4:30 PM

Adults \$3.00
Youth Under 18 \$1.00
Group Rates

Become a museum member and get free admission!

Looking for something special? The museum offers group tours, outreach programs and birthday parties! For a full list of our offerings or more information please email

L.C. Bates Museum

Route 201, P.O. Box 159
Hinckley, ME 04944

207-238-4250 • lcbates@gwh.org

www.gwh.org/lcbates
Visit us on [Facebook](https://www.facebook.com/lcbates)



To remove your name from our mailing list, please [click here](#).

Questions or comments? E-mail us at lcbates@gwh.org or call 207-238-4250